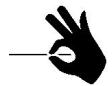


AP2 Series

Indoor LED Display Banner-P2, P3, P4(640x1920mm)



Slim Shape



Full Screen Image



13bits ~ 24bits



Amazing Display Capability



100,000h Lifespan



1920Hz ~ 3840Hz



Slim Design

Extra-Thin (88mm) : As a LED poster, this product is 40% thinner than normal similar ones in the market.

Extra-Light (28KG) : Our AP2 is 50% lighter than normal digital LED banner thanks to its excellent cabinet design.

100,000h Lifespan : This LED screen has 60% longer lifespan than normal totem LED display because of low attenuation.

Full Screen Image

Full screen can display images without any black area. The image area is bigger and the color contrast is higher. Besides, this LED poster's brightness can reach more than 800nits. The visual performance is superior.



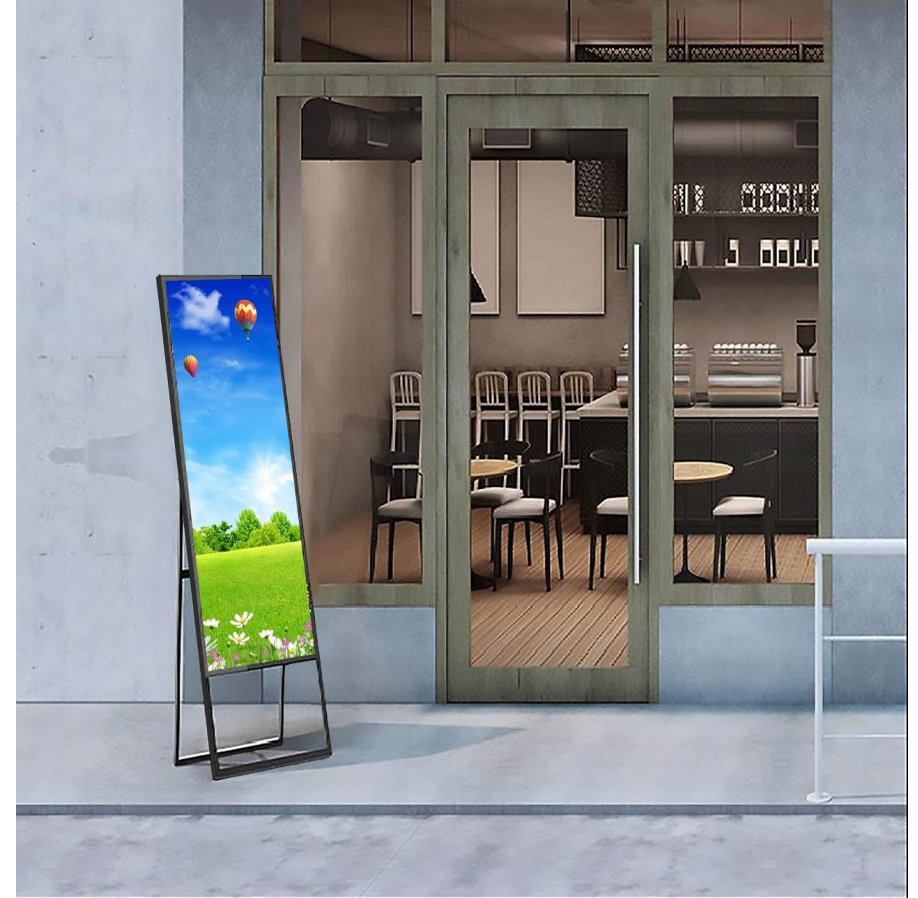


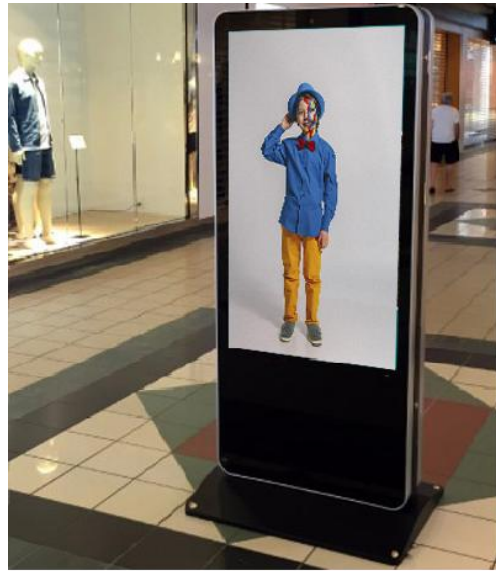
Amazing Display Capability

Excellent cabinet design gives this indoor fixed LED screen unlimited possibilities. When you put multiple screens together, they can perform like one big display. You won't even notice the stitching gap between screens. The completeness of pictures and videos played on the screen offers you extraordinary visual experience.

Excellent Performance

Benefiting from professional cabinet design and the higher quality materials, AP2 enhances advertising effects. As an advertising player, this product is able to catch customers' attention quickly with its splendid performance.





Applications Scenes

As an indoor Advertising player, AP2 is usually used in the shopping plaza or in front of stores, displaying advertisements.

AP2 Parameters

Item	P1.8	P2.5
Pixel Pitch	1.875mm	2.5mm
LED Type	SMD1515	SMD 2020
Module Resolution	160dots × 90dots	128dots × 64dots
Driving Mode	1/32scan	1/32scan
Module Pixels	14,400dots	8,192dots
Module Size	320mm × 160mm	320mm × 160mm
Panel display Size	640mm × 1920mm	640mm × 1920mm
Panel display Resolution	256dots × 768dots	256dots × 768dots
Pixel Density	284,444dots/m ²	160,000dots/m ²
Minimum Viewing Distance	≥1.8 m	≥2.5 m
Brightness	≥800nits	≥800nits
IP Grade	IP43	IP43
Refresh Rate	1,920Hz~3,840Hz	1,920Hz~3,840Hz
Gray Scale	13bits~24bits	13bits~24bits
Viewing Angle	H:160° / V:160°	H:160° / V:160°
Maximum Power Consumption	850W/m ²	850W/m ²
Average Power Consumption	260W/m ²	260W/m ²
Input Voltage	AC220V~AC110V @ 50Hz / 60Hz	AC220V~AC110V @ 50Hz / 60Hz
Operating Temperature	- 20℃~65℃	- 20℃~65℃
Operating Humidity	10%~90%	10%~90%
Cabinet Material	Iron	Iron
Weight of Machine	46kg/pc	46kg/pc
Dimension of Machine	720mm(w) x 1,975mm(h) x 101mm(d)	720mm(w) x 1,975mm(h) x 101mm(d)
Operating System	Windows (Win7, Win8, etc.)	Windows (Win7, Win8, etc.)
Signal Source Compatibility	DVI, HDMI1.3, DP1.2, SDI, HDMI2.0, etc.	DVI, HDMI1.3, DP1.2, SDI, HDMI2.0, etc.